

Model Numbers:
HS50-05, HS50-06, HS60-06 & HS60-08

DEPEND ON
DAVEY



TRANSFER PUMPS

PRODUCT DESCRIPTION

Robust & compact, 3 or 4 stage centrifugal pumps with corrosion resistant componentry and driven by a TEFC motor. Designed for total head duties to 50 m and flows to 110lpm

APPLICATIONS

Ideal for pumping clean, non-volatile liquids without fibres or solids in such applications as:-

- Household supply
- Irrigation
- Water transfer
- Washing systems
- Pressure Boosting

DESIGN FEATURES

PUMP

3 or 4 stage (impeller) design
 Unique floating impeller neckrings
 Closed vane impellers - "half blind" design
 Stainless steel pump shaft
 304 stainless steel casing
 Inbuilt & removable inlet check valve
 Mechanical shaft seal
 Oring casing seal

MOTOR

Davey manufactured
 TEFC with IP55 enclosure
 Class F insulation
 Permanently split capacitor design
 Double contact C3-HTG sealed bearings
 Inbuilt thermal overload protection
 Plastic feet on motor shell
 Heavy duty cast aluminium lantern bracket & drive end endshield
 "Plug & Play" power lead

OPERATING LIMITS

Max. casing pressure	1000kPa	Max. Ambient Temp.	50°C
Capacities to	110 lpm	Max. Water Temp.	50°C
Max. Total Head	50 m	Min. Water Temp.	1°C
Max. Suction Head	6 m		

BENEFITS

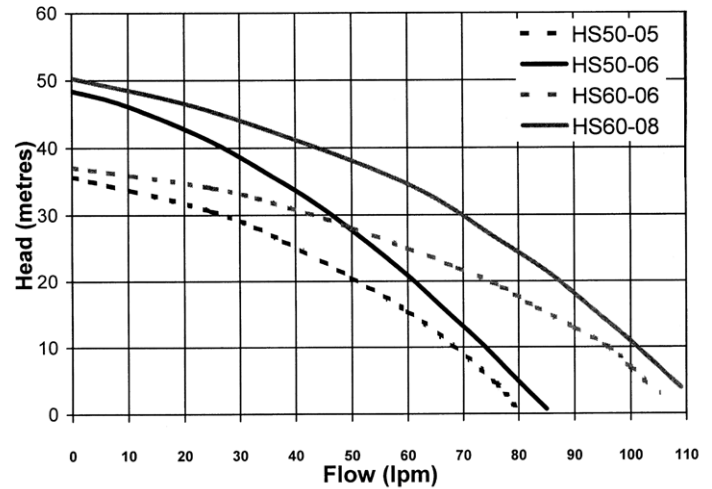
- Unique floating neckrings provide outstanding efficiency without compromising grit handling
- "Half blind" impellers maximise performance and help improve waterway clearances to reduce impeller blockages
- Manufactured from quality corrosion resistant materials
- TEFC motor corrosion resistant and protected against entry of dust and dirt
- Motor and pump designed for frequent starts
- Quick and easy installation
- Low maintenance
- Easy to service if required
- Low pressure loss through removable inbuilt check valve
- "Plug & Play" power lead allows easy system upgrade to a automatic water pressure system

TECHNICAL SPECIFICATIONS

MATERIALS OF CONSTRUCTION

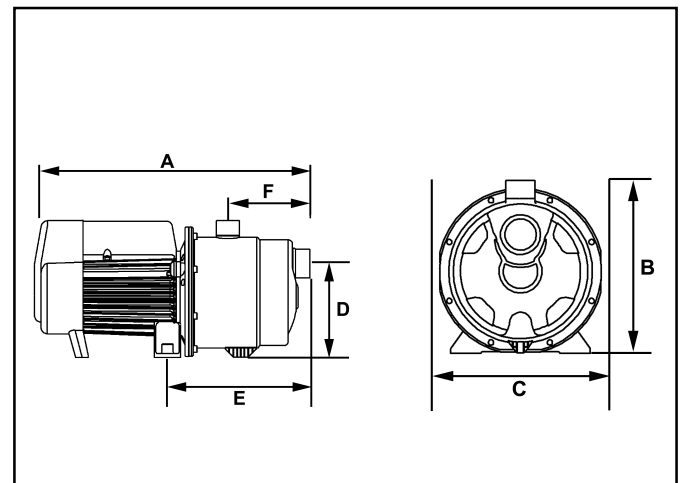
PART	MATERIAL
Impellers	Glass filled polycarbonate
Lock nut	304 stainless steel
Pump casing	304 stainless steel
Pump backplate	304 stainless steel
Pump shaft	303 stainless steel
Neckrings	Polypropylene
Seal ring (stationary)	Ceramic
Seal ring (rotating)	Carbon (synthetic)
Seal spring	304 stainless steel
Orings	Nitrile rubber
Stage body	Glass filled noryl
Suction check valve	
Body	Polypropylene
Spring	304SS
Seal	Nitrile
Stage spacer	Glass filled nylon (3 stage models)
Priming plug	Glass filled noryl
Motor shell	Marine grade aluminium
Lantern/DE endshield	Marine grade aluminium
Shell & Lantern finish	Baked polyester

HYDRAULIC PERFORMANCE



NOTE: All performance at 240V 50Hz

DIMENSIONS



MODEL	A	B	C	D	E	F	Mounting Holes Dia.	Inlet BSP	Outlet BSP	Net Weight kg.
HS50-05	405	212	205	145	222	126	10 @ 140 centres	1 1/4" F	1" F	8.9
HS50-06	405	212	205	145	222	126				8.8
HS60-06	405	212	205	145	222	126				8.9
HS60-08	430	212	205	145	222	126				10.3

All dimensions in mm unless otherwise stated.

ELECTRICAL DATA

	HS50-05	HS50-06	HS60-06	HS60-08
Supply voltage	220-240V			
Supply frequency	50Hz			
Full load current	3.2A	3.8A	3.5A	4.9A
Locked rotor current	12A	12A	12A	18A
Input power (P ₁)	.74kW	.89kW	.82kW	1.1kW
Output power (P ₂)	.53kW	.6kW	.57kW	.76kW
Enclosure class	IP55			
Insulation class	Class F			
Starting	P.S.C.			

NOTE: All performance at 240V 50Hz

INSTALLATION & PRIMING

- Installations with suction lift require a good quality foot valve to avoid loss of prime - remove inbuilt check valve
- To prime, fill pump body and suction line through priming plug hole located above suction inlet and replace plug.

Note: This literature is not a complete guide to product usage. Further information is available from your Davey dealer, Davey Customer Service Centre and from the relevant product Installation and Operating Instructions. This data sheet must be read in conjunction with the relevant product Installation and Operating Instructions and all applicable statutory requirements. Product specifications may change without notice.

© Davey is a registered trade mark of Davey Products Pty Ltd. © Davey Products Pty Ltd 2000

DEPEND ON
DAVEY

Davey Products Pty Ltd Interstate Offices

Member of the GUD Group
ABN 18 066 327 517

Head Office and Manufacturing

2 Hargreaves Street,
Huntingdale, Australia 3166
Ph: +61 3 9262 3222
Fax: +61 3 9543 4761
Website: www.davey.com.au
E-mail: admin@davey.com.au

Customer Service Centre

Ph: 1300 367 866
Fax: 1300 369 119
E-mail: sales@davey.com.au

Sydney – Brisbane – Adelaide
Perth - Townsville

International

2 Hargreaves Street,
Huntingdale, Australia 3166
Ph: +61 3 9262 3121
Fax: +61 3 9262 3151
AH: +61 3 9262 3222
E-mail: export@davey.com.au

Jordan

P O Box 6822 Amman 11118
Ph/Fax: +962 6 566 6858
E-mail: davey-jo@joinnet.com.jo

New Zealand

8 Ashfield Street,
Glenfield, Auckland 1310
Ph: +64 9 444 3622
Fax: +64 9 444 2179
Website: www.daveynz.co.nz
E-mail: sales@daveynz.co.nz

Germany

Kantstrasse 47,
04275 Leipzig
Ph: +49 341 301 0412
Fax: +49 341 301 0413
E-mail: DaveyEurop@aol.com